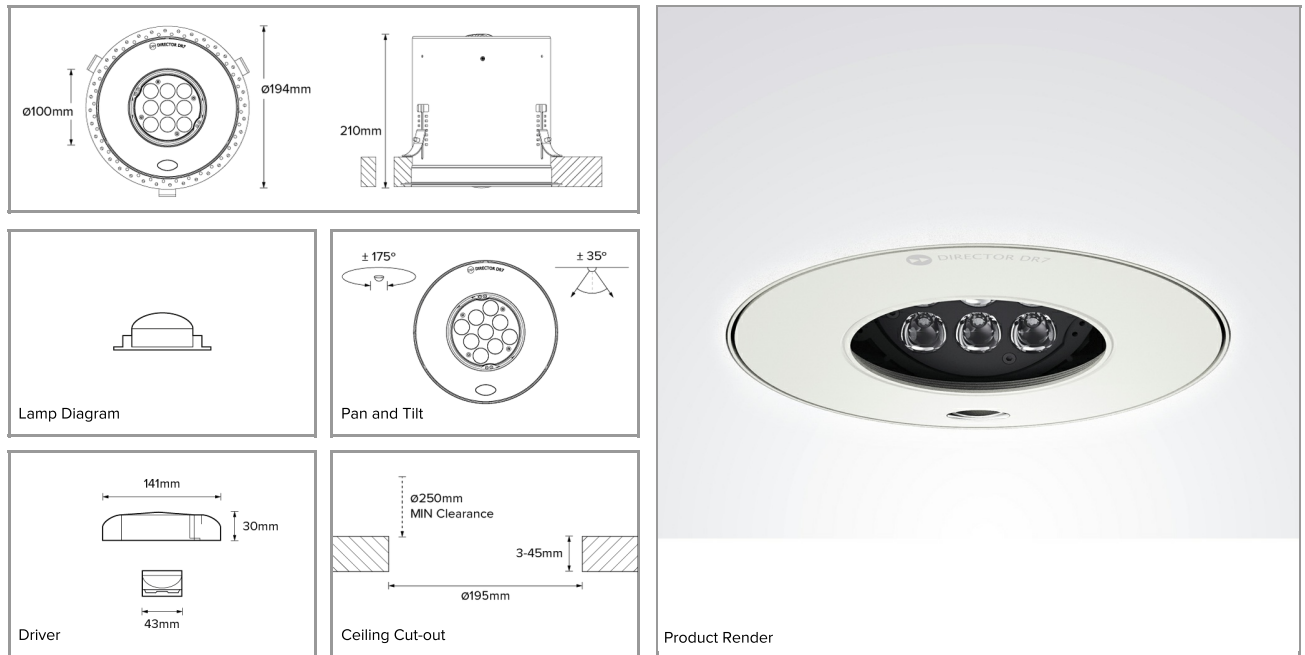


DR7; Recessed 2700K LED 6° Optic 20W



PHYSICAL

| | |
|---------------------------------|--|
| CONSTRUCTION MATERIALS: | LM24 Aluminium Glass-filled Polycarbonate Mild Steel mounting ring |
| MOUNTING: | Recessed |
| WEIGHT: | 2.96kg |
| FINISH: | White RAL9010 |
| MAX AMBIENT TEMPERATURE: | 40°C |
| CEILING CLEARANCE: | 250mm |
| CEILING CUT-OUT: | 195mm |
| CEILING THICKNESS: | 3-45mm |

CONTROL

| | |
|------------------------|------------------|
| MOVEMENT TYPE: | Handheld Remote |
| DIMMING OPTION: | Handheld Control |

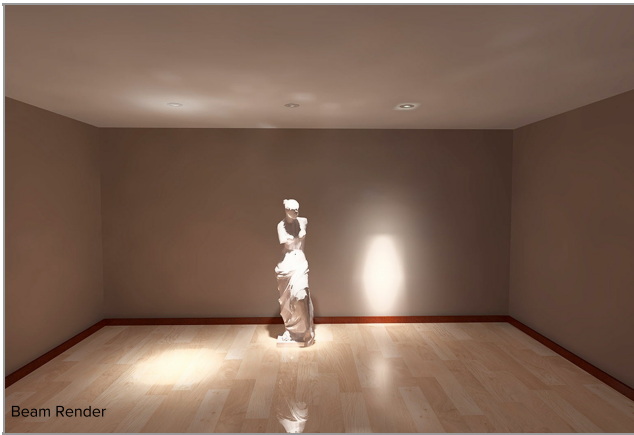
SPECIFICATION

DR7 2700K LED (20W for light source) trimless recessed luminaire with 6° optic. Manufactured from LM24 aluminium and glass-filled polycarbonate, with a mild-steel mounting ring. Finished in white (RAL 9010). Voltage is 220-240V 50/60HZ. Luminaire has high-performance colour rendering of 90+ CRI. Luminaire can be rotated, with +/- 175° movement through the pan axis and +/- 35° through the tilt axis, at a resolution of less than 1° in either axis. Movement and dimming is controlled using a handheld remote. Recording and recalling of scenes as standard.

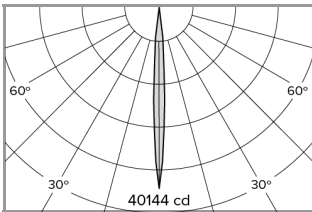
PART NO. **DR7.0151**

PRODUCT SUMMARY DR7 Spotlight; 220-240V 50/60Hz; Trimless Mounting; 6° Optic; 2700K 90+CRI LED 20W; White; Movement & Dimming using Handheld Remote

DR7; RECESSED 2700K LED 6° Optic 20W



Beam Render



Photometry

| 20W 6° | | 2700K LED |
|--------|------|-----------|
| 1m | 0.1m | 40144 lx |
| 2m | 0.2m | 10036 lx |
| 3m | 0.3m | 4460 lx |
| 4m | 0.4m | 2509 lx |
| 5m | 0.5m | 1606 lx |

Cone Diagram

MOVEMENT

| | |
|---------------------------|-----------------|
| MOVEMENT TYPE: | Handheld Remote |
| PAN MOVEMENT RANGE: | ±175° |
| TILT MOVEMENT RANGE: | ±35° |
| PAN MOVEMENT RESOLUTION: | <1° |
| TILT MOVEMENT RESOLUTION: | <1° |
| PAN SPEED OF MOVEMENT: | 25°/s |
| TILT SPEED OF MOVEMENT: | 7°/s |

LIGHTING

| | |
|---------------------------|--------|
| LIGHT SOURCE: | LED |
| MODULE LUMEN OUTPUT: | 1300lm |
| ABSOLUTE LUMEN OUTPUT: | 1100lm |
| GLARE MECHANICAL CUT-OFF: | 27° |
| GLARE COMFORT CUT-OFF: | 50° |
| COLOUR TEMP: | 2700K |

ELECTRICAL

| | |
|----------------------------|--------------------|
| VOLTAGE REGION: | 220 - 240V 50/60Hz |
| IEC PROTECTION CLASS: | Class 1 |
| LIGHT SOURCE WATTAGE: | 20W |
| MOVEMENT WATTAGE: | 4W |
| LUMINAIRE CIRCUIT WATTAGE: | 24W |
| CONTROL GEAR: | Remote LED Driver |

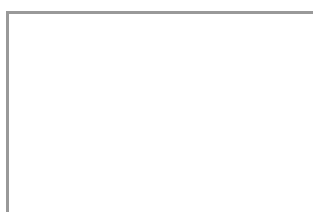
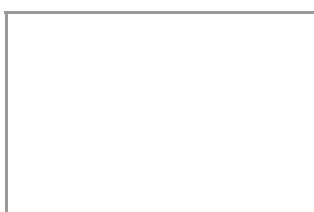
PART NO.

DR7.0151

PRODUCT SUMMARY DR7 Spotlight; 220-240V 50/60Hz; Trimless Mounting; 6° Optic; 2700K 90+CRI LED 20W; White; Movement & Dimming using Handheld Remote

DR7; RECESSED

4000K LED 24° Optic 20W



MOVEMENT

| | |
|---------------------------|-----------------|
| MOVEMENT TYPE: | Handheld Remote |
| PAN MOVEMENT RANGE: | ±175° |
| TILT MOVEMENT RANGE: | ±35° |
| PAN MOVEMENT RESOLUTION: | <1° |
| TILT MOVEMENT RESOLUTION: | <1° |
| PAN SPEED OF MOVEMENT: | 25°/s |
| TILT SPEED OF MOVEMENT: | 7°/s |

LIGHTING

| | |
|---------------------------|--------|
| LIGHT SOURCE: | LED |
| MODULE LUMEN OUTPUT: | 1690lm |
| ABSOLUTE LUMEN OUTPUT: | 1430lm |
| GLARE MECHANICAL CUT-OFF: | 27° |
| GLARE COMFORT CUT-OFF: | 50° |
| COLOUR TEMP: | 4000K |

ELECTRICAL

| | |
|----------------------------|--------------------|
| VOLTAGE REGION: | 220 - 240V 50/60Hz |
| IEC PROTECTION CLASS: | Class 1 |
| LIGHT SOURCE WATTAGE: | 20W |
| MOVEMENT WATTAGE: | 4W |
| LUMINAIRE CIRCUIT WATTAGE: | 24W |
| CONTROL GEAR: | Remote LED Driver |

PART NO.

DR7.0263

PRODUCT SUMMARY DR7 Spotlight; 220-240V 50/60Hz; Trimless Mounting; 24° Optic; 4000K 80+CRI LED 20W; White; Movement & Dimming using Handheld Remote