

BO OVERVIEW



Quickinfo

| | BO 55 basic ➔ 680 | BO 70 basic ➔ 684 | BO 70 focus ➔ 684 |
|------------------------|--------------------------------|--------------------------------|--------------------------------|
| SYSTEM POWER | 10 W, 21 W | 26 W | 23 W |
| LUMINOUS FLUX | 710 lm, 1650 lm | 2330 lm | 960 lm, 1360 lm |
| COLOUR RENDERING INDEX | CRI ≥ 90 | CRI ≥ 90 | CRI ≥ 90 |
| COLOUR TEMPERATURE | 2700 K, 3000 K, 4000 K | 3000 K, 4000 K | 3000 K, 4000 K |
| BEAM ANGLE | 6°, 14°, 23°, 33° | 18°, 24°, 36°, 58° | adjustable 17°-47° |
| HEAD DIMENSIONS | ø55 mm / H 140 mm | ø70 mm / H 136 mm | ø70 mm / H 147 mm |
| SUITABLE FOR | CANYON 15 TRACK 3-phase | CANYON 50 TRACK 3-phase | CANYON 50 TRACK 3-phase |



BO 70
shutter
➔ 688

23W
1015 cd, 1476 cd
CRI ≥ 90
3000K, 4000K

adjustable square light illumination

ø70 mm / H 198 mm

CANYON 50
TRACK 3-phase

BO 70
iris
➔ 688

23W
1040 cd, 1512 cd
CRI ≥ 90
3000K, 4000K

adjustable round light illumination

ø70 mm / H 198 mm

CANYON 50
TRACK 3-phase

BO 70
gobo
➔ 688

14W
-
CRI ≥ 90
3000K, 4000K

customised logo

ø70 mm / H 198 mm

CANYON 50
TRACK 3-phase

BO 70

basic / focus

xal.com/bo



Quickinfo

GENERAL

track light
IP20

LED

COB LED module
up to 88 lm/W
3000 K, 4000 K
CRI ≥ 90
Binning initial ≤ 3 MacAdam

ESTIMATED LED LIFETIME

L80/50 000 h

OPTICAL

direct illumination
beam angle 18°, 24°, 36°, 58°
beam angle (focus) 17–47°

ELECTRICAL

non DIM, DIM DALI

PHYSICAL

aluminium
powder-coated
polycarbonate driver housing

Description

DE Stromschiennenstrahler aus Aluminiumdruckguss; Oberfläche weiß oder schwarz pulverbeschichtet; Strahlerkopf 355° dreh- und 180° schwenkbar; optimiert für Einbau in einem CANYON 50 Kanal, Adapter verschwindet im Kanal; Konverter im Kunststoffadapter integriert; mit COB (Chip on Board) Technologie für höchste Effizienz; keine Bildung von Mehrfachschatten; energieeffiziente LEDs mit sehr guter Farbwiedergabe; Binning initial ≤ 3 MacAdam; lieferbar in den Lichtfarben 3000 K und 4000 K; CRI ≥ 90; min. 80% des Lichtstromes nach 50 000 h Lebensdauer BO 70 basic: hochwertiger Aluminiumreflektor mit sphärischer Facettenoptik; hochglänzend eloxiert; präzise Abstrahlcharakteristik mit vier verschiedenen Ausstrahlwinkeln; werkzeuglos einsetz- bzw. austauschbar; BO 70 focus: inkl. hochwertiger plan-konvexer Glaslinse; exakte Objekt-Fokussierung durch justierbare Linse; Ausstrahlwinkel von 17-47° einstellbar; Fokussierung mittels gummiertem Verstellring am Strahlerkopf; Schutzart IP20; SK I; Adapter für werkzeugloses Einsetzen bzw. Verschieben in verschiedenen 3-phasen Stromschiennen; optional DALI-dimmbar

EN Track light made of die-cast aluminium; surface powder coated in white or black; spot-light head 355° rotatable and 180° tiltable; optimised for installation in CANYON 50 channel, adapter disappears into channel; Integrated converter in the plastic adapter; COB (Chip on Board) technology for maximum efficiency; no multiple shadows; energy-efficient LEDs with very good colour rendering; binning initial ≤ 3 MacAdam; available in the light colours 3000K and 4000 K; CRI ≥ 90; min. 80% of the luminous flux after 50 000 hours; BO 70 basic: high quality aluminium reflector with spherical facet finish; high-gloss anodised; precise radiation characteristic with four different beam angles; installed and exchanged without tools; BO 70 focus: incl. high quality plano-convex glass lens; precise object focusing through adjustable lens; adjustable beam angle of 17-47°; focusing by means of rubberised adjusting ring on the spotlight head; protection class IP20; PC I; adapter for toolless insertion or movement on a variety of 3-phase power tracks; optional DALI dimmable

CANYON 50
offset

[page 738](#)



CANYON 50
surface / susp.

[page 742](#)



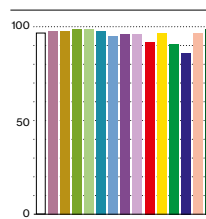
Features



optimised adaptor for
CANYON 50



adjustable beam angle
17–47° (BO 70 focus)



CRI ≥ 90 (R9 > 90)

Standard configuration

COLOUR TEMPERATURE ⋮
3000K 5

CONTROL ⬆
non DIM 1

MATERIAL COLOUR ▣
white 7
black 8



BEAM ANGLE ▲
flood 36° F

Extended configuration

COLOUR TEMPERATURE ⋮
4000K 6

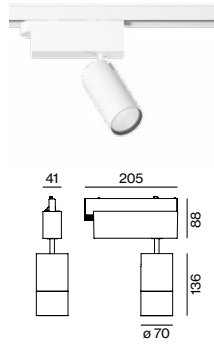
CONTROL ⬆
DIM DALI 3

MATERIAL COLOUR ▣
white/black adaptor housing P

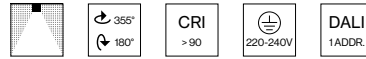


+5% surcharges

BEAM ANGLE ▲
spot 18° S
medium 24° M
wide flood 58° W



BO 70 basic



| | | | |
|---------------------|---------------------|----------------------|---|
| SYSTEM POWER | COLOUR TEMP. | LUMINOUS FLUX | ORDER CODE |
| 26 W | 3000 K 4000 K | 2180 lm 2330 lm | 0 5 3 - 3 2 4 1 ⋮ ⬆ ▲ |

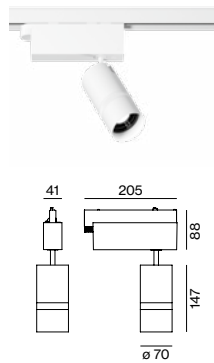
luminous flux spot 18°

LIGHT DISTRIBUTION for 26 W, 3000 K

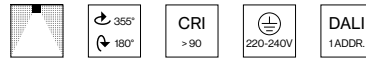
| spot 18° | | | medium 24° | | | flood 36° | | |
|----------|--------|-------|------------|--------|-------|-----------|--------|-------|
| h (m) | E (lx) | ø (m) | h (m) | E (lx) | ø (m) | h (m) | E (lx) | ø (m) |
| 1 | 13907 | ø0,31 | 1 | 9006 | ø0,42 | 1 | 5279 | ø0,65 |
| 2 | 3476 | ø0,62 | 2 | 2251 | ø0,84 | 2 | 1319 | ø1,31 |
| 3 | 1545 | ø0,93 | 3 | 1000 | ø1,27 | 3 | 586 | ø1,96 |
| 4 | 869 | ø1,24 | 4 | 562 | ø1,69 | 4 | 329 | ø2,61 |
| 5 | 556 | ø1,55 | 5 | 360 | ø2,11 | 5 | 211 | ø3,27 |

wide flood 58°

| h (m) | E (lx) | ø (m) |
|-------|--------|-------|
| 1 | 2223 | ø1,12 |
| 2 | 555 | ø2,24 |
| 3 | 247 | ø3,35 |
| 4 | 138 | ø4,47 |
| 5 | 88 | ø5,59 |



BO 70 focus



| | | | |
|---------------------|---------------------|----------------------|---|
| SYSTEM POWER | COLOUR TEMP. | LUMINOUS FLUX | ORDER CODE |
| 23 W | 3000 K 4000 K | 1260 lm 1360 lm | 0 5 3 - 3 4 4 1 ⋮ ⬆ ▲ |

LIGHT DISTRIBUTION for 3000 K

| min. angle 17° | | | max. angle 47° | | |
|----------------|--------|-------|----------------|--------|-------|
| h (m) | E (lx) | ø (m) | h (m) | E (lx) | ø (m) |
| 1 | 5316 | ø0,30 | 1 | 2187 | ø0,87 |
| 2 | 1329 | ø0,60 | 2 | 546 | ø1,74 |
| 3 | 590 | ø0,89 | 3 | 243 | ø2,60 |
| 4 | 332 | ø1,19 | 4 | 136 | ø3,47 |
| 5 | 212 | ø1,49 | 5 | 87 | ø4,34 |

Inspiration

Taschen Store
Berlin, Germany

ARCHITECT

SPIESS Interior Design
Dresden, Germany

LIGHTING DESIGN

Salvatore Licitra
Alberto Stampanoni
Milan, Italy

PRODUCT

TRACK 3-phase recessed
BO 70 basic



