

SONIC

free standing (absorber)

xal.com/sonic



Quickinfo

GENERAL

free standing
IP20

LED

Mid-power LED
up to 140lm/W
3000 K, 4000 K
CRI ≥ 80
Binning initial ≤ 3 MacAdam

ESTIMATED LED LIFETIME

L80/50 000 h

OPTICAL

direct/indirect illumination
microprismatic (UGR < 19)

ELECTRICAL

touch DIM
daylight & movement sensor

PHYSICAL

aluminium
powder-coated
acoustically effective

Description

DE Stehleuchte mit konischem Leuchtenkopf aus gerolltem Aluminiumprofil; Oberfläche weiß oder dunkelgrau pulverbeschichtet; rundes Aluminiumstandrohr wahlweise zentral oder dezentral angeordnet; runder Standfuß mit Ausnehmung für Tischfuß; mit direkt/indirekter Abstrahlcharakteristik für zusätzliche Akzentuierung der Decke und mehr Sehkomfort; Indirektlichtanteil mit klarem Acrylglas abgedeckt; Direktanteil: Mikroprismatische PMMA-Abdeckung; absolut homogene Ausleuchtung; inkl. Reflektor aus hochreflektierendem Material (96% Reflexionsgrad); bildschirmtaugliche Arbeitsplatzleuchte nach DIN EN 12464-1 (UGR < 19); energieeffiziente LEDs mit sehr guter Farbwiedergabe; Binning initial ≤ 3 MacAdam; lieferbar in den Lichtfarben 3000 K und 4000 K; CRI ≥ 80; min. 80 % des Lichtstromes nach 50 000 h Lebensdauer Schutzart IP20; SK I; einfache Regelung durch integrierte touch DIM-Funktion am Leuchtenkopf; optional nicht dimmbar; optional dimmbar mit integriertem Infrarot Anwesenheits- und Helligkeitssensor; inkl. Anschlussleitung (3 m) mit Schutzkontaktstecker; schallreduzierendes Zubehör erhältlich: patentiertes Schallschutzelement aus expandiertem Polystyrol (EPS)

EN Free standing luminaire with conical luminaire head from rolled aluminium profile; surface white or dark grey powder coated; round aluminium downpipe arranged centralised or decentralised; round pedestal with recess for table base; with direct/indirect illumination characteristic for additional emphasis of the ceiling and more visual comfort; indirect component covered with clear acrylic glass; direct component: microprismatic PMMA cover; completely homogeneous illumination; incl. reflector in high reflectance material (96% reflectance); workplace light suitable for VDUs according to DIN EN 12464-1 (UGR < 19); energy-efficient LEDs with very good colour rendering; binning initial ≤ 3 MacAdam; available in the light colours 3000 K and 4000 K; CRI ≥ 80; min. 80 % of the luminous flux after 50 000 hours; protection class IP20; PC I; easy control through integrated touch DIM function on light head; optional non-dimmable; optionally dimmable with integrated infrared presence and brightness sensor; incl. connection cable (3 m) with safety plug; noise reducing accessories available: patented soundproofing element made of expanded polystyrene (EPS)

SONIC

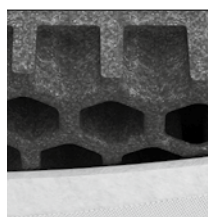
suspended
[page 318](#)



Features



one piece acoustic ring, in 2 colours



patented honeycomb structure

Standard configuration

COLOUR TEMPERATURE ⋮
3000K 5

CONTROL ⬆
touch DIM 5

MATERIAL COLOUR ▣
white 7



LIGHT OPTIC COVER
microprismatic (UGR < 19)

Extended configuration

COLOUR TEMPERATURE ⋮
4000K 6

CONTROL ⬆
non DIM switch 1
daylight & movement sensor 7

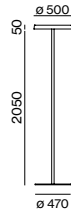
MATERIAL COLOUR ▣
dark grey 6



+5% surcharges

Options on request

COLOUR RENDERING INDEX
CRI ≥ 90



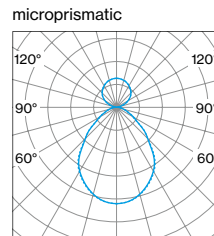
SONIC centric pole free standing

DIRECT / INDIRECT

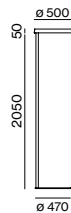


SYSTEM POWER	COLOUR TEMP.	LUMINOUS FLUX	ORDER CODE
37W	3000K	↓ 3430 / ↑ 1470 lm	0 5 9 - 6 9 3 4 ⋮ ⬆ ▣ P
	4000K	↓ 3640 / ↑ 1560 lm	

LIGHT DISTRIBUTION



direct / indirect



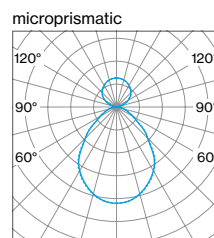
SONIC excentric pole free standing

DIRECT / INDIRECT

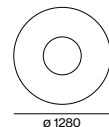


SYSTEM POWER	COLOUR TEMP.	LUMINOUS FLUX	ORDER CODE
37W	3000K	↓ 3430 / ↑ 1470 lm	0 5 9 - 6 9 8 4 ⋮ ⬆ ▣ P
	4000K	↓ 3640 / ↑ 1560 lm	

LIGHT DISTRIBUTION



direct / indirect

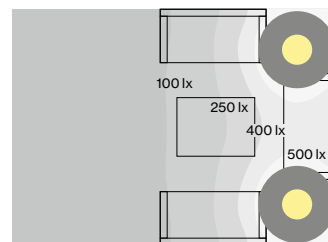


Accessory

ABSORBER

TYPE	ORDER CODE
bazalt grey	9 5 9 - 6 9 9 9 1 1 6
light grey	9 5 9 - 6 9 9 9 1 1 7

Technical data



SONIC excentric pole free standing
+ absorber, 37W, 4000K,
direct / indirect

ROOM VALUES

Room dimensions	5.4 × 4 × 2.8 m
Reflection factor	0.7 0.5 0.2
Maintenance factor	0.8

CALCULATION SURFACE

Surface dimensions	Floor
Surface height	0 m

GLARE EVALUATION

Table Classification X=4H Y=8H S=0.25H	
UGR transversal	< 19
UGR axial	< 19
65° < 3000 cd/m ²	



Inspiration

DocSander - Dentist Practice Room
Munich, Germany

ARCHITECT
architopia_christine detering
gramming Architekten
Munich, Germany

PRODUCT
SONIC free standing (absorber)



