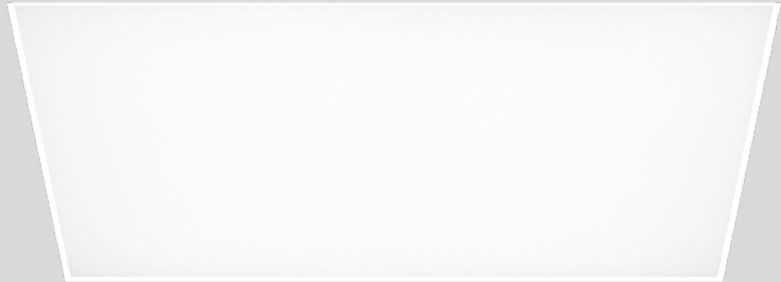


MENO SQUARE

trimless

xal.com/meno



Quickinfo

GENERAL

recessed
IP20
plasterboard ceilings only

LED

Mid-power LED
up to 122lm/W
3000K, 4000K
CRI ≥ 80
Binning initial ≤ 3 MacAdam

ESTIMATED LED LIFETIME

L80/50000h

OPTICAL

direct illumination
PMMA cover opal
microprismatic (UGR < 19)

ELECTRICAL

non DIM, DIM DALI
DALI: CLO
emergency light 1h / 3h

PHYSICAL

aluminium
powder-coated
halogen-free cable

Description

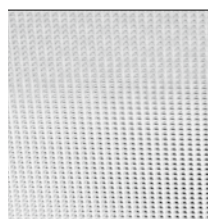
DE Quadratischer Leuchtenkörper aus Aluminium; für den randlosen Einbau in Gipskartondecken; spezielle Randausbildung mit Rillen für bessere Haftung der Spachtelmasse; für Deckenstärken von 10-25 mm; Oberfläche weiß pulverbeschichtet; Leuchtgehäuse für Deckeneinbau vorab lieferbar; Lichteinsatz bestehend aus Konvertereinheit und Platineinheit; werkzeuglose mechanische Verbindung mittels Drehverschluss; elektrische Verbindung mittels verpolungssicherem Steckersystem; hochreflektierende Beschichtung für verbesserten Wirkungsgrad; absolut homogen ausgeleuchtete, satinierte oder mikroprismatische PMMA-Abdeckung; bildschirmtaugliche Arbeitsplatzleuchte nach DIN EN 12464-1 (UGR < 19); Abdeckung werkzeuglos abnehmbar für einfache Wartung; gleiche Leuchtdichte bei allen Flächenleuchten; energieeffiziente LEDs mit sehr guter Farbwiedergabe; Binning initial ≤ 3 MacAdam; lieferbar in den Lichtfarben 3000K und 4000K; CRI ≥ 80; min. 80% des Lichtstromes nach 50 000 h Lebensdauer Leuchte mit 2 Kabelöffnungen und Steckklemme für Durchgangsverdrahtung; Schutzart IP20; SK I; DALI-dimmbar mit CLO-Funktion; optional nicht dimmbar; optional mit LED Notlichtelement mit 1h oder 3h Akku und Selbsttest

EN Square aluminium luminaire housing; for trimless installation in plasterboard ceilings; specially designed trim (grooves) for better adhesion of smoothing compound; for ceiling thickness of 10-25mm; surface white powder coated; luminaire housing for ceiling installation available in advance; lighting insert consisting of converter unit and circuit board unit; mechanical connection without tools using twist closure; electrical connection by means of reverse polarity protected plug system; highly reflective coating for improved efficiency; completely homogeneously illuminated, satinised or microprismatic PMMA cover; workplace light suitable for VDUs according to DIN EN 12464-1 (UGR < 19); cover removable without tools for easy maintenance; same luminance for all flat luminaires; energy-efficient LEDs with very good colour rendering; binning initial ≤ 3 MacAdam; available in the light colours 3000K and 4000K; CRI ≥ 80; min. 80% of the luminous flux after 50 000 hours; luminaire with 2 cable openings and plug-in terminals for through wiring; protection class IP20; PC I; DALI dimmable with CLO function; optional non-dimmable; optional with LED emergency light with 1h or 3h battery and self test

Features



skimmed into plasterboard ceiling (trimless)



microprismatic (UGR < 19)

Standard configuration

COLOUR TEMPERATURE ⋮
3000K 5

CONTROL ⬆
DIM DALI / CLO 3

MATERIAL COLOUR
white



LIGHT OPTIC COVER ☑
opal O

Extended configuration

COLOUR TEMPERATURE ⋮
4000K 6

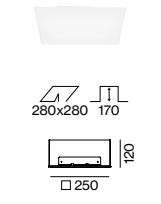
CONTROL ⬆
non DIM 1

LIGHT OPTIC COVER ☑
microprismatic (UGR < 19) P

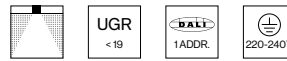
EMERGENCY LIGHT ●
1h accupack N L 1
3h accupack N L 3

Options on request

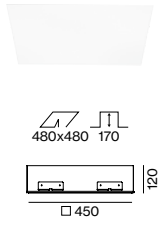
COLOUR RENDERING INDEX
CRI ≥ 90



MENO SQUARE 250 trimless



SYSTEM POWER	COLOUR TEMP.	LUMINOUS FLUX	ORDER CODE
8 W	3000K	810lm	0 6 3 - 2 5 2 6 ⋮ ⬆ 7 ☑
	4000K	860lm	

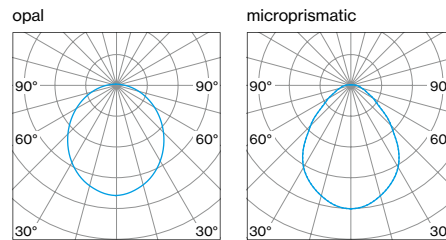


MENO SQUARE 450 trimless



SYSTEM POWER	COLOUR TEMP.	LUMINOUS FLUX	ORDER CODE
24 W	3000K	2710lm	0 6 3 - 2 5 4 6 ⋮ ⬆ 7 ☑ ●
	4000K	2880lm	

LIGHT DISTRIBUTION



Inspiration

Best Friends Cafe
Athens, Greece

ARCHITECT
Blossom
Athens, Greece

LIGHTING DESIGN
HALO
Athens, Greece

PRODUCT
MENO SQUARE trimless



