

MINIMAL 60

trimless

xal.com/minimal

Quickinfo

GENERAL

recessed
IP 20
opt. concrete installation housing

LED

Mid-power LED
up to 3562 lm/W
up to 115 lm/W
3000 K, 4000 K
CRI \geq 80
Binning initial \leq 3 MacAdam

ESTIMATED LED LIFETIME

L80/50 000 h

OPTICAL

direct illumination
PMMA cover opal
microprismatic (UGR < 19)

ELECTRICAL

non DIM, DIM DALI

PHYSICAL

aluminium
powder-coated
halogen-free cable

MINIMAL 60

system trimless
recessed
[page 496](#)



Description

DE Leuchtenkörper aus Aluminiumstrangpressprofil; geeignet für den randlosen Einbau in Gipskartondecken; spezielle Randausbildung mit Rillen für bessere Haftung der Spachtelmasse; geeignet für Deckenstärken von 8-25 mm; Oberfläche weiß pulverbeschichtet; Leuchtenprofil für Montage vorab lieferbar; restliche Leuchtenkomponenten werkzeuglos montierbar; Lichteinsatz bestehend aus hochreflektierend lackiertem Strangpressprofil für verbessertes Thermomanagement; HPO (High Performance Opal) Abdeckung für homogene Ausleuchtung; mikroprismatische PMMA-Abdeckung inkl. Diffusorfolie zur Reduktion der Leuchtdichte bei homogener Ausleuchtung; bildschirmtaugliche Arbeitsplatzleuchte nach DIN EN 12464-1 (UGR < 19) bei Powerswitch-Einstellung "e"; energieeffiziente LEDs mit sehr guter Farbwiedergabe; Powerswitch (e, e², e²⁺) bei schaltbarer Ausführung, am Lichteinsatz einstellbar; Binning initial \leq 3 MacAdam; lieferbar in den Lichtfarben 3000 K und 4000 K; CRI \geq 80; min. 80 % des Lichtstromes nach 50 000 h Lebensdauer Schutzart IP 20; SK I; wahlweise nicht dimmbar oder DALI-dimmbar

EN Luminaire housing made of extruded aluminium; for trimless installation in plasterboard ceilings; special edge design with grooves for better adhesion of filler; suitable for ceiling thickness of 8-25 mm; surface white powder coated; luminaire profile for mounting available in advance; remaining luminaire components mounted without tools; lighting insert consisting of highly reflective coated extruded profile for improved thermal management; HPO (High Performance Opal) cover for uniform illumination; micro prismatic PMMA diffuser incl. diffuser film for homogeneous illumination and reduced luminance; screen work capable luminaire as per DIN EN 12464-1 (UGR < 19) with powerswitch setting "e"; energy-efficient LEDs with very good colour rendering; powerswitch (e, e², e²⁺) with switchable versions, adjustable on the insert; binning initial \leq 3 MacAdam; available in the light colours 3000 K and 4000 K; CRI \geq 80; min. 80 % of the luminous flux after 50 000 hours; protection class IP 20; PC I; optionally non-dimmable or DALI dimmable

Features



skimmed into plasterboard ceiling (trimless)



power switch



tunable white 3000-6000 K on request

Standard configuration

COLOUR TEMPERATURE ⦿
3000 K 5

CONTROL ↕
non DIM (switchable e/e²/e²⁺) 1
DIM DALI (only e²) 3

MATERIAL COLOUR
white

LIGHT OPTIC COVER □
opal high performance H

Extended configuration

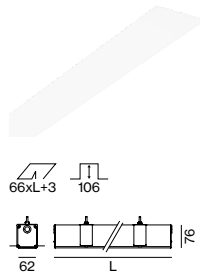
COLOUR TEMPERATURE ⦿
4000 K 6

LIGHT OPTIC COVER □
microprismatic Z
microprismatic (UGR < 19)* G
*UGR < 19 only with e LED

Options on request

COLOUR RENDERING INDEX
CRI ≥ 90

COLOUR TEMPERATURE
tunable white 3000–6000 K (2 DALI)



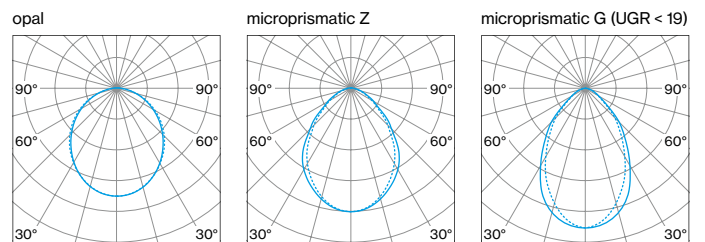
MINIMAL 60 trimless



SYS. POWER	COLOUR TEMP.	LUM. FLUX	L (mm)	ORDER CODE
10W e	3000K	860 lm	576	0 5 2 - 3 2 P 2 ↕ 7 □
	4000K	980 lm		
15W e ²	3000K	1470 lm		
	4000K	1560 lm		
21W e ²⁺	3000K	1920 lm		
	4000K	2040 lm		
13W e	3000K	1290 lm	876	0 5 2 - 3 2 P 3 ↕ 7 □
	4000K	1470 lm		
22W e ²	3000K	2210 lm		
	4000K	2350 lm		
31W e ²⁺	3000K	2880 lm		
	4000K	3060 lm		
17W e	3000K	1720 lm	1176	0 5 2 - 3 2 P 4 ↕ 7 □
	4000K	1950 lm		
29W e ²	3000K	2950 lm		
	4000K	3130 lm		
41W e ²⁺	3000K	3830 lm		
	4000K	4070 lm		
21W e	3000K	2150 lm	1476	0 5 2 - 3 2 P 5 ↕ 7 □
	4000K	2440 lm		
37W e ²	3000K	3680 lm		
	4000K	3910 lm		
52W e ²⁺	3000K	4790 lm		
	4000K	5090 lm		
34W e	3000K	3430 lm	2348	0 5 2 - 3 2 P 8 ↕ 7 □
	4000K	3910 lm		
59W e ²	3000K	5890 lm		
	4000K	6260 lm		
82W e ²⁺	3000K	7670 lm		
	4000K	8150 lm		

luminous flux opal high performance, -13% by microprismatic Z cover,
-15% by microprismatic G (UGR < 19) cover

LIGHT DISTRIBUTION

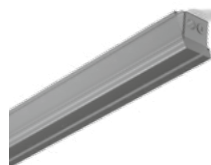


Mounting accessories

CONCRETE INSTALLATION HOUSING

L (mm)	W-H (mm)	ORDER CODE
582	75-88	0 3 6 - 0 4 0 6 6
882	75-88	0 3 6 - 0 4 0 9 6
1182	75-88	0 3 6 - 0 4 1 2 6
1482	75-88	0 3 6 - 0 4 1 5 6
2354	75-88	0 3 6 - 0 4 2 3 6

no use for wall installation (only on request)



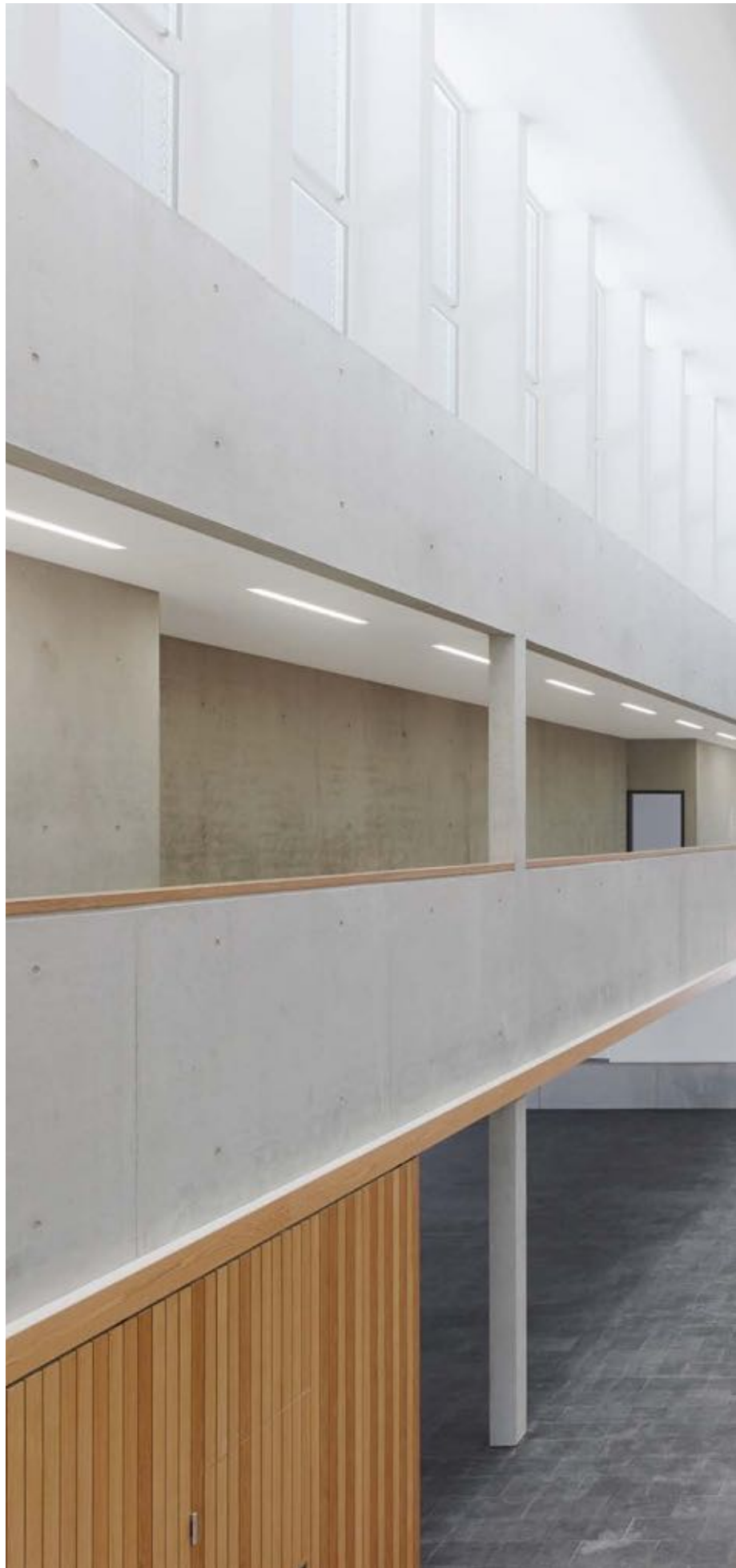
Inspiration

Gymnasium Buchloe
Allgäu, Germany

ARCHITECT
LRO Architekten
Stuttgart, Germany

LIGHTING DESIGN
ratec licht
Lindenberg, Germany

PRODUCT
MINIMAL 60 trimless





MINIMAL 100

trimless

xal.com/minimal

Quickinfo

GENERAL

recessed
IP 20
opt. concrete installation housing

LED

Mid-power LED
up to 3990 lm/m
up to 129 lm/W
3000 K, 4000 K
CRI ≥ 80
Binning initial ≤ 3 MacAdam

ESTIMATED LED LIFETIME

L80/50 000 h

OPTICAL

direct illumination
PMMA cover opal
microprismatic (UGR < 19)

ELECTRICAL

non DIM, DIM DALI

PHYSICAL

aluminium
powder-coated
halogen-free cable

MINIMAL 100

system trimless
recessed
[page 532](#)



Description

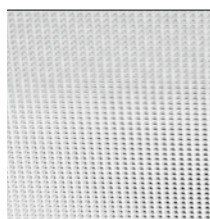
DE Leuchtenkörper aus Aluminiumstrangpressprofil; geeignet für den randlosen Einbau in Gipskartondecken; spezielle Randausbildung mit Rillen für bessere Haftung der Spachtelmasse; geeignet für Deckenstärken von 8-25 mm; Oberfläche weiß pulverbeschichtet; Leuchtenprofil für Montage vorab lieferbar; restliche Leuchtenkomponenten werkzeuglos montierbar; Lichteinsatz bestehend aus hochreflektierend lackiertem Strangpressprofil für verbessertes Thermomanagement; HPO (High Performance Opal) Abdeckung für homogene Ausleuchtung; mikroprismatische PMMA-Abdeckung inkl. Diffusorfolie zur Reduktion der Leuchtdichte bei homogener Ausleuchtung; bildschirmtaugliche Arbeitsplatzleuchte nach DIN EN 12464-1 (UGR < 19) bei Powerswitch-Einstellung "e" und "e2"; energieeffiziente LEDs mit sehr guter Farbwiedergabe; Powerswitch (e, e², e²⁺) bei schaltbarer Ausführung, am Lichteinsatz einstellbar; Binning initial ≤ 3 MacAdam; lieferbar in den Lichtfarben 3000 K und 4000 K; CRI ≥ 80; min. 80 % des Lichtstromes nach 50 000 h Lebensdauer Schutzart IP 20; SK I; wahlweise nicht dimmbar oder DALI-dimmbar

EN Luminaire housing made of extruded aluminium; for trimless installation in plasterboard ceilings; special edge design with grooves for better adhesion of filler; suitable for ceiling thickness of 8-25 mm; surface white powder coated; luminaire profile for mounting available in advance; remaining luminaire components mounted without tools; lighting insert consisting of highly reflective coated extruded profile for improved thermal management; HPO (High Performance Opal) cover for uniform illumination; micro prismatic PMMA diffuser incl. diffuser film for homogeneous illumination and reduced luminance; screen work capable luminaire as per DIN EN 12464-1 (UGR < 19) with powerswitch setting "e" and "e²"; energy-efficient LEDs with very good colour rendering; powerswitch (e, e², e²⁺) with switchable versions, adjustable on the insert; binning initial ≤ 3 MacAdam; available in the light colours 3000 K and 4000 K; CRI ≥ 80; min. 80 % of the luminous flux after 50 000 hours; protection class IP 20; PC I; optionally non-dimmable or DALI dimmable

Features



skimmed into plasterboard ceiling (trimless)



microprismatic (UGR < 19)



power switch



tunable white 3000-6000 K on request

Standard configuration

COLOUR TEMPERATURE ⦿
3000K 5

CONTROL ⬇
non DIM (switchable e/e²/e²⁺) 1
DIM DALI (only e²) 3

MATERIAL COLOUR
white



LIGHT OPTIC COVER ⦿
opal high performance H

Extended configuration

COLOUR TEMPERATURE ⦿
4000K 6

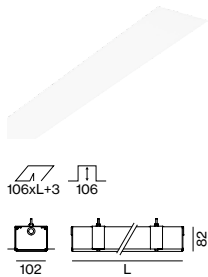
LIGHT OPTIC COVER ⦿
microprismatic Z
microprismatic (UGR < 19)* G

*UGR < 19 only with e/e² LED

Options on request

COLOUR RENDERING INDEX
CRI ≥ 90

COLOUR TEMPERATURE
tunable white 3000–6000K (2 DALI)



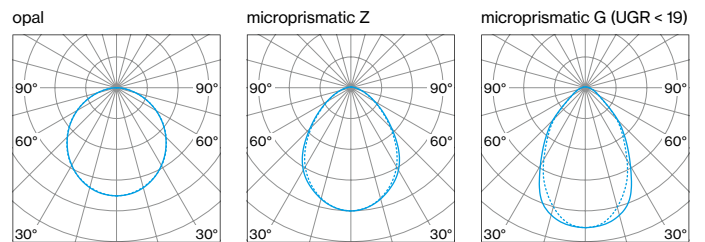
MINIMAL 100 trimless



SYS. POWER	COLOUR TEMP.	LUM. FLUX	L (mm)	ORDER CODE
10W e	3000K	1030 lm	576	0 5 2 - 3 3 P 2 ⦿ 7 ⦿
	4000K	1090 lm		
15W e ²	3000K	1650 lm	876	0 5 2 - 3 3 P 3 ⦿ 7 ⦿
	4000K	1750 lm		
21W e ²⁺	3000K	2150 lm	1176	0 5 2 - 3 3 P 4 ⦿ 7 ⦿
	4000K	2280 lm		
13W e	3000K	1540 lm	1476	0 5 2 - 3 3 P 5 ⦿ 7 ⦿
	4000K	1640 lm		
22W e ²	3000K	2470 lm	2348	0 5 2 - 3 3 P 8 ⦿ 7 ⦿
	4000K	2630 lm		
31W e ²⁺	3000K	3220 lm	2348	0 5 2 - 3 3 P 8 ⦿ 7 ⦿
	4000K	3420 lm		
17W e	3000K	2060 lm	2348	0 5 2 - 3 3 P 8 ⦿ 7 ⦿
	4000K	2190 lm		
29W e ²	3000K	3300 lm	2348	0 5 2 - 3 3 P 8 ⦿ 7 ⦿
	4000K	3510 lm		
41W e ²⁺	3000K	4300 lm	2348	0 5 2 - 3 3 P 8 ⦿ 7 ⦿
	4000K	4560 lm		
21W e	3000K	2570 lm	2348	0 5 2 - 3 3 P 8 ⦿ 7 ⦿
	4000K	2730 lm		
37W e ²	3000K	4120 lm	2348	0 5 2 - 3 3 P 8 ⦿ 7 ⦿
	4000K	4380 lm		
52W e ²⁺	3000K	5370 lm	2348	0 5 2 - 3 3 P 8 ⦿ 7 ⦿
	4000K	5700 lm		
34W e	3000K	4120 lm	2348	0 5 2 - 3 3 P 8 ⦿ 7 ⦿
	4000K	4380 lm		
59W e ²	3000K	6600 lm	2348	0 5 2 - 3 3 P 8 ⦿ 7 ⦿
	4000K	7010 lm		
82W e ²⁺	3000K	8590 lm	2348	0 5 2 - 3 3 P 8 ⦿ 7 ⦿
	4000K	9130 lm		

luminous flux opal high performance, -8% by microprismatic Z cover,
-10% by microprismatic G (UGR < 19) cover

LIGHT DISTRIBUTION

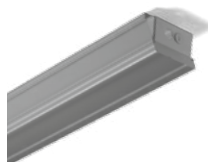


Mounting accessories

CONCRETE INSTALLATION HOUSING

L (mm)	W-H (mm)	ORDER CODE
582	116-94	0 3 6 - 0 5 0 6 6
882	116-94	0 3 6 - 0 5 0 9 6
1182	116-94	0 3 6 - 0 5 1 2 6
1482	116-94	0 3 6 - 0 5 1 5 6
2354	116-94	0 3 6 - 0 5 2 3 6

no use for wall installation (only on request)



Inspiration

One Shelley Street, Macquarie Group
Sydney, Australia

ARCHITECT
Clive Wilkinson Architects
California, USA

LIGHTING DESIGN
Space Lighting Pty Ltd.
Surry Hills, Australia

PRODUCT
MINIMAL 100 trimless



