

COMBO ROUND trim

xal.com/combo



Quickinfo

GENERAL

recessed
IP20

LED

Mid-power LED
up to 138lm/W
3000K, 4000K
CRI > 80
Binning < 3-Step MacAdam

ESTIMATED LED LIFETIME

L80/50000h

OPTICAL

direct illumination
PMMA cover opal
microprismatic (UGR < 19)

ELECTRICAL

non DIM, DIM DALI
DALI: CLO

PHYSICAL

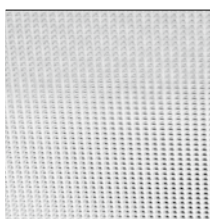
aluminium
powder-coated
halogen-free cable

Description

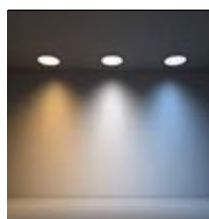
DE Runder Leuchtenkörper aus Aluminium mit umlaufendem Rand; geeignet für den Einbau in Gipskartondecken; geeignet für Deckenstärken von 10-25mm; Oberfläche weiß pulverbeschichtet; werkzeuglose mechanische Verbindung mittels Federverschluss; hochreflektierende Beschichtung für verbesserten Wirkungsgrad; absolut homogen ausgeleuchtete, satinierte oder mikroprismatische Arbeitsplatzleuchte nach DIN EN 12464-1 (UGR < 19); gleiche Leuchtdichte bei allen Flächenleuchten; energieeffiziente LEDs mit sehr guter Farbwiedergabe; Binning initial \leq 3 MacAdam; lieferbar in den Lichtfarben 3000K und 4000K; CRI \geq 80; min. 80% des Lichtstromes nach 50000h Lebensdauer Leuchte mit 2 Kabelöffnungen und Steckklemme für Durchgangsverdrahtung; Schutzart IP20; SK I; DALI-dimmbar mit CLO-Funktion; optional nicht dimmbar

EN Round luminaire housing in aluminium with trim; suitable for installation in plaster-board ceilings; suitable for ceiling thickness of 10-25mm; surface white powder coated; mechanical connection without tools using spring closure; highly reflective coating for improved efficiency; completely homogeneously illuminated, satinised or microprismatic PMMA cover; workplace light suitable for VDUs according to DIN EN 12464-1 (UGR < 19); same luminance for all flat luminaires; energy-efficient LEDs with very good colour rendering; binning initial \leq 3 MacAdam; available in the light colours 3000K and 4000K; CRI \geq 80; min. 80% of the luminous flux after 50000 hours; luminaire with 2 cable openings and plug-in terminals for through wiring; protection class IP20; PC I; DALI dimmable with CLO function; optional non-dimmable

Features



microprismatic
(UGR < 19)



tunable white 3000-
6000K on request

Standard configuration

COLOUR TEMPERATURE ⋮
3000K 5

CONTROL ↕
non DIM 1

MATERIAL COLOUR
white



LIGHT OPTIC COVER ☑
opal 0

Extended configuration

COLOUR TEMPERATURE ⋮
4000K 6

CONTROL ↕
DIM DALI / CLO 3

LIGHT OPTIC COVER ☑
microprismatic (UGR < 19) P

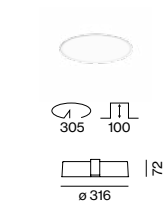
Options on request

COLOUR RENDERING INDEX
CRI ≥ 90

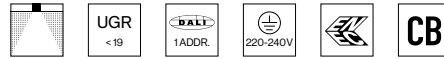
COLOUR TEMPERATURE
tunable white 3000–6000K (2 DALI)

EMERGENCY LIGHT
1h accupack
3h accupack

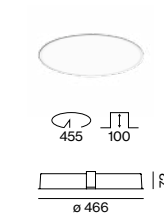
ACCESSORY
concrete installation housing



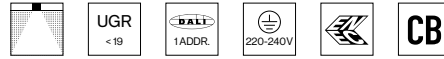
COMBO ROUND 300 trim



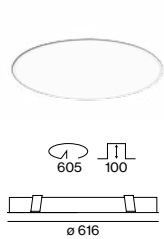
SYSTEM POWER	COLOUR TEMP.	LUMINOUS FLUX	ORDER CODE
12 W	3000K 4000K	1300lm 1380lm	0 6 4 - 1 0 3 1 ⋮ ↕ 7 ☑



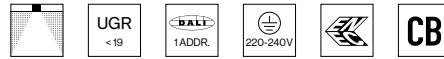
COMBO ROUND 450 trim



SYSTEM POWER	COLOUR TEMP.	LUMINOUS FLUX	ORDER CODE
16 W	3000K 4000K	2070lm 2200lm	0 6 4 - 1 0 4 1 ⋮ ↕ 7 ☑

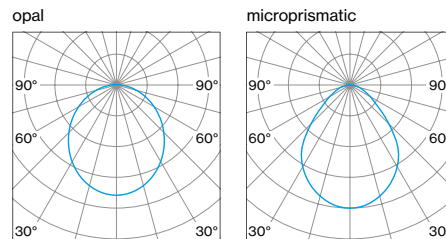


COMBO ROUND 600 trim



SYSTEM POWER	COLOUR TEMP.	LUMINOUS FLUX	ORDER CODE
31 W	3000K 4000K	3970lm 4220lm	0 6 4 - 1 0 5 1 ⋮ ↕ 7 ☑

LIGHT DISTRIBUTION



Inspiration

Dermatologic Clinic
Portugal

PRODUCT
COMBO ROUND trim

ARCHITECT

José Martinez Silva
Ateliercentral Arquitectos
Lisbon, Portugal

LIGHTING DESIGN

Lightlab and José Martinez Silva
Ateliercentral Arquitectos
Lisbon, Portugal



